



DVR Product Line

- ◆ **XQ series**
- ◆ **XQ lite**
- ◆ **JSA-HQ series**
- ◆ **JSA- HX series**
- ◆ **JSA-2000 series for PC based**

DVR – XQ series



◆ Main Features

- Available in 4,9,16 Channels Models (XQ400,XQ900,XQ1600)
- **Pentaplex Function** (Live/Recording/Playback/Networking/Back up at the same time)
- MPEG4 Compression
- **High performance (480 fps Displaying / 480 fps Recording)**
- External Backup Device : CD/DVD-RW, Memory stick, Network backup, USB HDD, Removable HDD
- Self-diagnosis and notification of system status with **S.M.A.R.T protocol**
- Full Support for Digital Zoom 2X, 2 Spot, Alarm, PTZ Control

◆ Function

• Powerful Networking

Full support for remote functionality via DHCP,DDNS,10/100 Base-T Ethernet, Static/Dynamic IP
Networking Time synchronization using Industrial standard protocol (NTP), Email notification, Callback Support.

• Real-time Live Monitoring

Alarm Handling (Motion, Video Loss, Sensor, Event Control), 2 Spot Monitor support.

• User friendly video search

Support 16 channels Playback / Simultaneous / Smart / Event (Motion, Sensor) / Panorama Search.
Save a screenshot or an AVI(1CH)

• Multiple Functions

Firmware upgrade via USB or CD-RW or Network
Fully support the multiple language (Default: English)

• Remote System Monitoring

Alarm Handling like Motion, Video Loss, Sensor, Event (Popup, Sound) Control
Full support for CMS, Callback Agent, PDA Viewer, Web viewer



Setup mode



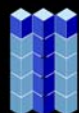
Live mode



Search mode

◆ Specification

	XQ400	XQ900	XQ1600
Camera Inputs	4CH	9CH	16CH
Camera outputs	VGA, S-Video, Loopout, 2 Spot		
Compression	MPEG-4		
Recording Frame	120fps(100fps)	240fps(200fps)	480fps(400fps)
Display Frame	120fps(100fps)	270fps(200fps)	480fps(400fps)
OS	Embedded Linux		
Quadplex	Live, Recording, Playback, Networking, Backup at the same time		
Sensor in / Alarm out	4in / 4out	8in / 4out	16in / 4out
Audio	4 in / 1 out (G.723 Compression)		
Display Split	1,4	1,4,9	1,4,9,16
Digital Zoom	2X		
System Control	Front Buttons, Jog shuttle and IR Remote Controller, Mouse Supported.		
Features			
Recording Modes	Normal, Event, Always + Event, Sensor, Schedule		
Recording Quality	Lowest, Low, Normal, High, Highest (5 steps)		
Recording Resolution	720x480, 720x240, 360x240		
Search Mode	Date & Time, Calendar, Event(Motion, Sensor), First & Last		
PTZ Control	Pan/Tilt, Zoom, Focus, Iris, Preset		
Backup	CD/DVD-RW, 3 USB(2.0), Removable HDD, USB HDD, Memory Stick		
Control Unit	IR Remote Controller, Mouse Supported.		
Storage	4EA x HDD		
Upgrade	USB or Network (Firmware software)		
Network	10/100M Base-T Ethernet, LAN, WAN, Web, DHCP/DDNS, Static/Dynamic IP		
Remote Monitoring S/W	CMS, Callback Agent, Web viewer, PDA viewer		
Hardware			
Power	115/230VAC, 60/50Hz, 6/3A		
Dimension	435(W) X 425(D) X 87(H) mm		
Weight	About 7KGS without CDRW and P		



DVR – XQ lite

◆ Main Features

Max D1@
120 recording

2EA
USB 2.0

1 SPOT



Compatible
with XQ series

Max.
2 HDD



Setup mode



Live mode



Search mode

◆ Specification

Compression	MPEG-4
Recording Frame	120fps(100fps)
Display Frame	120fps(100fps)
OS	Embedded Linux
Quadplex	Live, Recording, Playback, Networking, Backup at the same time
Sensor in / Alarm out	4in / 1out
Audio	4 in / 1 out (G.723 Compression)
Display Split	1,4
Digital Zoom	2X
System Control	Front Buttons, IR Remote Controller, Mouse Supported.
Features	
Recording Modes	Normal, Event, Always + Event, Sensor, Schedule
Recording Quality	Lowest, Low, Normal, High, Highest (5 steps)
Recording Resolution	720x480, 720x240, 360x240
Search Mode	Date & Time, Calendar, Event(Motion, Sensor), First & Last
PTZ Control	Pan/Tilt, Zoom, Focus, Iris, Preset
Backup	CD/DVD-RW, 2 USB(2.0), Removable HDD, USB HDD, Memory Stick
Control Unit	IR Remote Controller, Mouse Supported.
Storage	2EA x HDD
Upgrade	USB or Network (Firmup software)
Network	10/100M Base-T Ethernet, LAN, WAN, Web, DHCP/DDNS, Static/Dynamic IP
Remote Monitoring S/W	CMS, Callback Agent, Web viewer, PDA viewer
Hardware	
Power	115/230VAC, 60/50Hz, 6/3A
Dimention	435(W) X 425(D) X 87(H) mm
Weight	About 7KGS without CDRW and HDD

DVR – HQ series



◆ Main Features

- Available in 4,8,16 Channels Models (HQ400,HQ800,HQ1600)
- Triplex Function (Recording/Playback/Networking at the same time)
- **MPEG4 Compression**
- Multiple Video Outputs: S-Video, VGA, Loop out
- Mini Player : Auto installation into CD during backup
- External Backup Device : CD-RW, Memory stick, Network backup, USB HDD, Removable HDD
- **Internal Storage: Max.750GB X 2 HDD**
- Remote Access and Total Management from Client PC
- Accessed By Web Browser (Internet Explorer)
- Support Various PTZ Protocols
- Static and Dynamic IP Support

◆ Function

• Real Time - Live Monitoring

Simultaneously monitor up to 16 Cameras in realtime. Various views including full screen. Full control of PTZ Cameras

• User Friendly Video Search

The easy to use Search function will help you find the video you need right away. Search by time, date and camera.

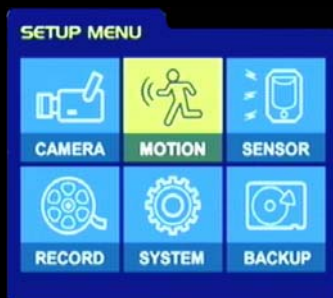
• Remote Video Search

Login to your system remotely and have access to all saved video. Search by day, camera and time. Save a screenshot or an AVI video file.

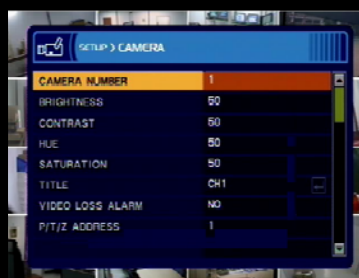
• Remote System Viewing

Monitor your security cameras from any location with internet access.

You can also search for video, perform backup and control every aspect of your DVR.



Setup mode



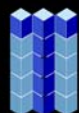
Menu inside



Remote program

◆ Specification

O/S	Embedded Linux		
Triplex	Recording, Playback, Networking at the same time		
Sensor in / Alarm out	4in / 4out	8in / 4out	16in / 4out
Audio	4 in / 1 out		
Live Display	1,4	1,4,8	1,4,8,16
System Control	Front Buttons, Jog shuttle and IR Remote Controller		
Features			
Recording Modes	Continuous, Sensor, Motion, Sensor + Motion, Manual		
Recording Quality	Lowest, Low, Normal, High, Highest		
Recording Resolution	D1, Half D1, CIF		
Pre Event Recording	1 to 5 seconds		
Post Event Recording	1 to 60 seconds		
Motion Detection	8 Levels of Sensitivity, 330 Cells		
Search Mode	Calendar or Time		
Playback Modes	Fast Forware/ Rewind/ Play/ Stop/ Forward by step/ 1 level ~ 3 level		
PTZ Control	Motion,Zoom,Focus,Protocols incl. Pelco&Vicon. Built-in 485 Converter		
Backup	CD RW, USB1.1(1EA), Network, Removable HDD		
	"Mini Player" is copied automatically during backup any data.		
Storage	2 HDD or 1HDD with built-in CD-RW		
HDD	From 40GB to 750GB / Compatible with Samsung, Seagate, Maxtor, Hitachi		
Communication Port	RS-485(PTZ), RS-232C, Ethernet Lan, USB		
Upgrade	Via USB or Network (Firmup software)		
Network	LAN, WAN, DHCP,DDNS, Static/Dynamic IP		
Web	Web access		
Remote S/W	Live, Playback, Backup(JPG, AVI,DVR file), Setup		
Recovery	Auto rebooting maintaining Setup values if there is Power fail		
System Utility	3 Level Password / Watch Dog / Disk Format / Remote System Upgrade		
Security	Watermark		
Multi Connection	CMS(Central Management Software)		
Hardware			
Power	110/240 VAC, 50/60Hz Selectable		
Dimention	380(W) X 420(D) X 70.3(H) mm		
Weight	About 10KG with CDRW and HDD		



DVR – HX series



◆ Main Features

- Available in 4,8,16 Channels Models (HX400,HX800,HX1600)
- Quadplex (Live / Recording / Playback / Networking / Backup at the same time)
- **Advanced Mpeg-4**
- Multiple Video Outputs: VGA, CRT Monitor, Spot, Loop out
- Quick Search function
- Various Backup: **CD/DVD RW**, USB stick, Network backup, USB HDD, Removable HDD
- **Internal Storage: 4EA HDD**
- Accessed By Web Browser (IE)
- Remote Access and Total Management from Client PC
- Static and Dynamic IP Support

◆ Function

- **Real Time - Live Monitoring**
Simultaneously monitor up to 16 Cameras in realtime. Various views including full screen.
Full control of PTZ Cameras
- **Panorama Video Search**
The easy to use Search function will help you find the video you need right away. Search by time, date and camera.
- **Remote Video Search**
Login to your system remotely and have access to all saved video. Search by day, camera and time.
Save a screenshot or an AVI video file.
- **Remote System Viewing**
Monitor your security cameras from any location with internet access. You can also search for video, perform backup and control every aspect of your DVR.

◆ Specification

	HX400	HX800	HX1600
Camera Inputs	4CH	8CH	16CH
Camera outputs	VGA, CRT Monitor, Loopout		
Compression	Advanced MPEG-4		
Recording Frame	120fps(100fps)	120fps(100fps)	120fps(100fps)
Display Frame	120fps(100fps)	240fps(200fps)	480fps(400fps)
O/S	Embedded Linux		
Quadplex	Live, Recording, Playback, Networking, Backup at the same time		
Sensor in / Alarm out	4in / 1out	8in / 1out	16in / 4out
Audio	1 Channel, G.726 Compression		
Live Display	1,4	1,4,7,8	1,4,7,9,10,13,16
System Control	Front Buttons, IR Remote Controller		
Features			
Recording Modes	Always, Motion, Sensor + Motion, Schedule		
Recording Quality	Standard, High, Highest, Super		
Recording Resolution	Half D1, CIF		
Pre Event Recording	10 seconds		
Post Event Recording	1 to 100 seconds		
Motion Sensitivity	Low, Normal, High, Highest (across the screen, no specific area)		
Search Mode	Time and Date / Overapped List / Event / Go to Fist & Last		
PTZ Control	Possible(17 Protocols: Pelco D/P, Samsung, Honeywell)		
	PTZ Control from Remote S/W		
Backup	CD, DVD, USB, Network,Removable HDD		
Storage	4EA HDD		
HDD	From 80GB to 500GB / Compatible with Samsung, Seagate, Maxtor, Hitachi		
Communication Port	RS-485(PTZ), RS-232C, Ethernet Lan, USB		
Upgrade	Via USB or Network		
Network	LAN, WAN, Internet, DHCP,DDNS, Static/Dynamic IP		
Network Speed	10/100Mbps Base-T Ethernet		
Web	Web access (Only Monitoring)		
Remote S/W	Live, Playback, Backup(JPG, AVI,DVR file), Setup		
Recovery	Auto rebooting maintaining Setup values if there is Power fail		
Multi Connection	CMS(Central Management Software)		
Hardware			
Power	100 V or 240 V selectable, 50/60 Hz		
Dimention	350(W) X 400(D) X 880(H) mm		
Weight	6KG		

PC DVR – JSA 2000



◆ Main Features

• Various layouts of monitoring screen

- Support equal split in 1,4,9,16 split types
- Support unequal split in 1+5,1+7,2+8,3+4 split types

• High definition monitoring screen and high speed recording

• RS422, RS485 converter built-in

• Smart Search function

- Function for convenient and fast search by informing the result after extracting the motion for specific area of recorded images

• Remote monitoring, Remote search, Remote control, Remote back up function

• Water-Mark support

• Each camera resolution & frame rate set-up available

• Language: English, Russian, Taiwanese, French, Spanish, Japanese, German, Polish, Portuguese

◆ Function

• Multi-channel audio recording function and built in speaker

• Pan/Tilt (PTZ) related control function and Pre-set function

• E-mail transfer with alarm

• Intensive recording function on any event detection

- Resolution, Frame rate increasing

• More powerful networking support

- 240fps transmission (TCP/IP), Remote back up & setup, Block-off function of client monitoring & connection

• Center Program available to control local DVRs on one area

- E-map, log info record, local operation info support, 64 split image on one screen.**

• DVR Vaccine S/W embedded (Option)



Monitoring/Recording Screen



Setup Screen



E-map Screen

◆ Specification

		JSA-2004S	JSA-2008S	JSA-2008D	JSA-2016S	JSA-2016SO	JSA-2016D	JSA-2016DO	JSA-2032D	JSA2016H
Video	Input	4CH	8CH	8CH	16CH	16CH	16CH	16CH	32CH	16CH
	Output	PC Monitor								
Display	S.Split	1,4	1,4,6,7,8	1,4,6,7,8,9,10,16	1,4,6,7,8,9,10,16	1,4,6,7,8,9,10,16	1,4,6,7,8,9,10,16	1,4,6,7,8,9,10,16	1,4,6,7,8,9,10,16,32	1,4,6,7,8,9,10,16
	Resolution	320*240, 640*240, 640*480								
Frame	Display	120fps	120fps	240fps	120fps	480fps	240fps	480fps	240fps	480fps
	Recording	120fps	120fps	240fps	120fps	120fps	240fps	240fps	240fps	480fps
Compression	Size	0.5 - 2Kbytes								
	Algorithm	Modified MPEG								
Sensor	Input	8, 16 port								
	Output	8, 16 port								
Audio	1 CH Default (4, 8, 16 CH option)									
Sound Out	Option									
Remote Control	PSTN, ISND									
	TCP / IP									
Pre Alarm	Yes									
Video Motion Detection	Yes									
Image & Recorded Video	Yes									
PAN/TILT	Possible, Embedded, RS Converter default									
Mult View(Center S/W)	Possible (option)									
Backup	3.5" FDD, DAT									
	DVD, CD-RW									
	Network									
	Removable HDD									
Dimension	483(W) x 88(H) X 501.2(D)mm / 18kg									